



pearson
ferrier

pearson
ferrier®

21 WOLSTENHOLME AVENUE
Bury, BL9 5HN
£230,000

21 WOLSTENHOLME AVENUE

Property at a glance

- SEMI-DETACHED PROPERTY
- THREE BEDROOMS
- IMMACULATLEY PRESENTED
- TWO RECEPTION ROOMS
- SOUTH FACING REAR GARDEN

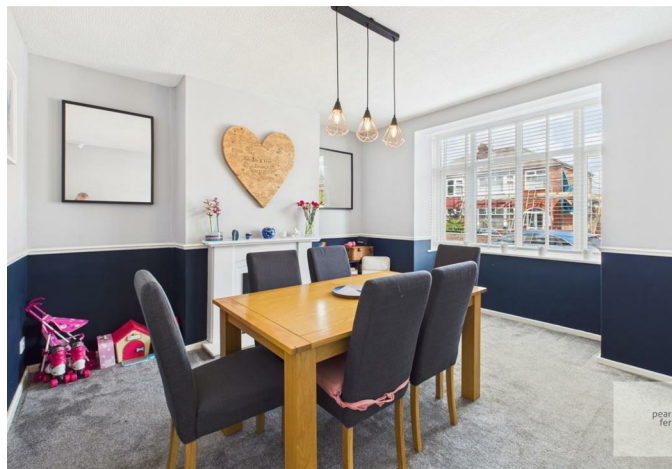
Immaculately presented three bedroom, two reception room semi detached property in the Limefield area of Bury just off Walmersley Road. The location offers excellent access to Bury & Ramsbottom centres with local shops, schools and local countryside being close by yet with Junction 1 M66 being only a short drive. The property really must be viewed to appreciate the condition and accommodation on offer. In Brief the property comprises of; Entrance hall, Sitting/dining room with bay window, lounge and kitchen with under floor heating. To the first floor are three bedrooms two being double and beautiful contemporary three piece bathroom. The property benefits from garden to the front and a southerly facing rear garden and is ideal for a first time buyer or a growing family.

Tenure - Leasehold - 999 years (less 10 days) from 24 December 1945

Ground Rent £5 per year

EPC-tbc

Council Tax Band - B







Floor 0



Floor 1

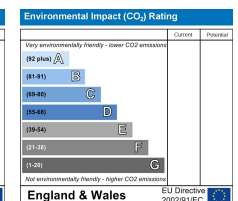
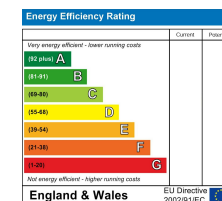
Approximate total area⁽¹⁾
79.7 m²

(1) Excluding balconies and terraces

While every attempt has been made to ensure accuracy, all measurements are approximate, not to scale. This floor plan is for illustrative purposes only.

Calculations are based on RICS IPMS 3C standard.

GIRAFFE360



Bury Office
435/7 Walmersley Road, Bury, Lancashire, BL9 5EU
Telephone: 0161 764 4440
Fax: #
Email: bury@pearsonferrier.co.uk

www.pearsonferrier.co.uk

pearson
ferrier[®]

All statements contained in these particulars are for indicative purposes only and are made without responsibility on the part of Pearson Ferrier and the vendors of this property and are not to be relied on as statements or representations of fact. Potential purchasers should satisfy themselves by inspection or otherwise as to the accuracy of such details contained in these particulars.